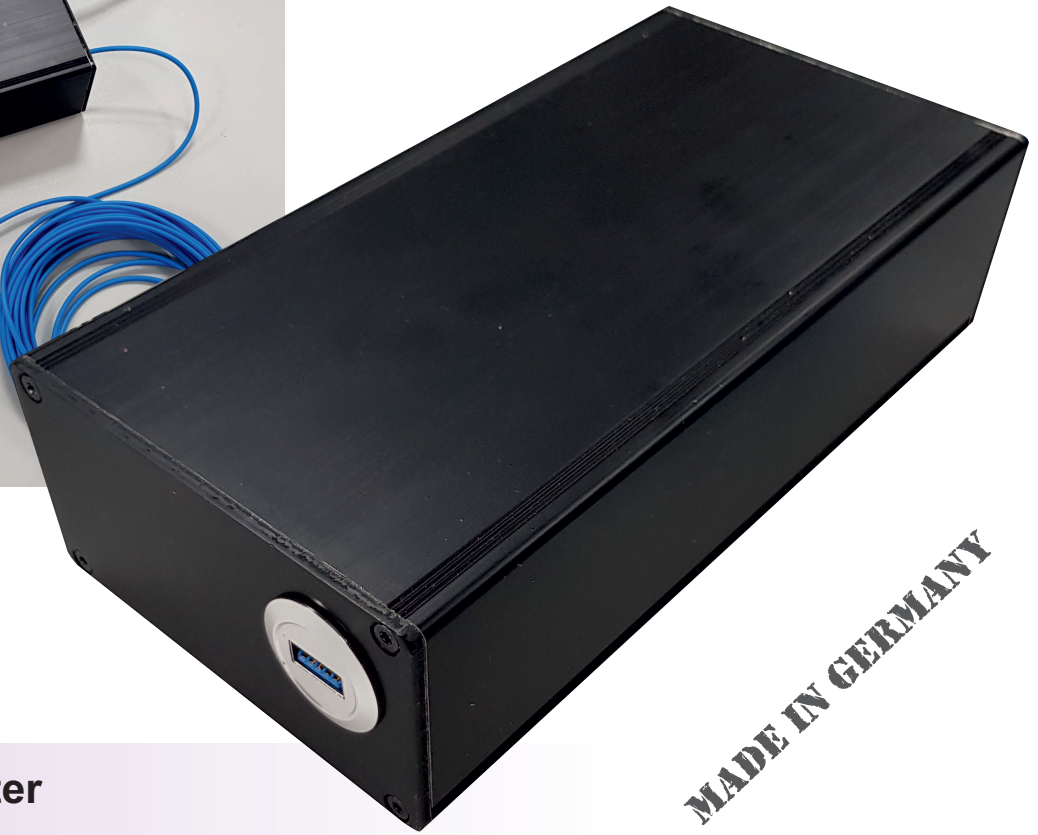


AVT EMC USB Converter

Electro-optical USB-Converter

especially for EMC and test laboratories,
as well as general applications



MADE IN GERMANY

USB 1.0 - 3.0 Converter

USB-device types 1.0 - 2.0 and 3.0

maximum transmission data rate up to 5 Gbit/s

full data transparency (no driver dependency)

power supply for EUT with 5 V / 3 A / 15 W

power supply device with 85 - 250 VAC / 47 - 63 Hz

wide temperature range

data transmission and control with fiber optic cable

variants of fiber cable length 10 m / 20 m / 30 m / 50 m / 70 m / 100 m

high interference immunity > 100 V/m

Options:

higher interference immunity

All options on: www.world-of-emc-equipment.com
(www.woeeq.com)

Ordering informations

AVT - EMCUSB - Conv - 3 - 01

USB device

Converter

USB version

2: USB 2 socket A

3: USB 3 socket A

3C: USB 3 socket C

device version

Example: AVT-EMCUSB-Conv-3-01

Technical specifications

Converter		
USB compatibility	USB 1.0, 1.1, 2.0	USB 3.0
maximum data throughput	5 Gbit/s	5 Gbit/s
data transparency ¹ (no driver dependency)	x	x
length of fiber optic cable	10 m, 20 m, 30 m, 50 m, 70 m, 100 m	10 m, 20 m, 30 m, 50 m, 70 m, 100 m
Electrical connection		
	min	max
voltage range	85 V	255 V
AC frequency range	47 Hz	63 Hz
AC input current (typ.)	0,25 A / 230 VAC	0,35 A / 115 VAC
output values to EUT	5 V / 3 A / 15 W	
voltage tolerance	± 2 %	
efficiency (typ.)	77 %	
Inrush current (typ.)	65 A / 230 VAC	
Leakage current	< 2 mA / 240 VAC	
operating temperature range	-10°C ... 55°C	
Protection		
overload	above 105 % rated power (Hiccup mode)	
over voltage	5,75 V - 6,75 V	
over temperature	shut down voltage / automatic recovery	
Size		
length of housing without connections	200 (USB 1 - 2), 160 mm (USB 3)	
width	105 mm	
height	54 mm	
weight	270 g	

Contact

Subject to errors and changes.

AVT GmbH • Automatisierungs- und Verfahrenstechnik • Am Hammergrund 1 • 98693 Ilmenau • Deutschland
 Tel: +49 (0)3677 6479-56 • Fax: +49 (0)3677 6479-69 • Web: www.avt-ilmenau.de • Mail: info@avt-ilmenau.de